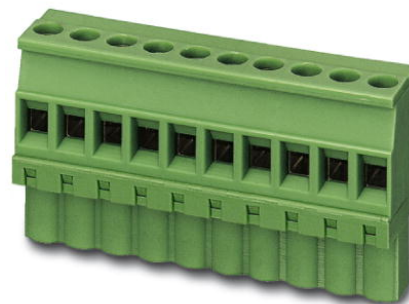


## MVSTBW 2,5/16-ST

Order No.: 1792663

The figure shows a 10-position version of the product

<http://eshop.phoenixcontact.de/phoenix/treeViewClick.do?UID=1792663>Plug component, nominal current: 12 A, rated voltage: 250 V, pitch:  
5.0 mm, no. of positions: 16, type of connection: Screw connection

### Commercial data

|                          |                    |
|--------------------------|--------------------|
| EAN                      | 4017918045098      |
| Pack                     | 50 Pcs.            |
| Customs tariff           | 85366990           |
| Weight/Piece             | 0.03475 KG         |
| Catalog page information | Page 179 (CC-2007) |

### Product notes

WEEE/RoHS-compliant since:  
01/01/2003

<http://www.download.phoenixcontact.com>  
Please note that the data given here has been taken from the online catalog. For comprehensive information and data, please refer to the user documentation. The General Terms and Conditions of Use apply to Internet downloads.

### Technical data

#### Dimensions / positions

|                        |        |
|------------------------|--------|
| Pitch                  | 5 mm   |
| Dimension a            | 75 mm  |
| Number of positions    | 16     |
| Screw thread           | M 3    |
| Tightening torque, min | 0.5 Nm |

**Technical data**

|                                    |                     |
|------------------------------------|---------------------|
| Insulating material group          | I                   |
| Rated surge voltage (III/3)        | 4 kV                |
| Rated surge voltage (III/2)        | 4 kV                |
| Rated surge voltage (II/2)         | 4 kV                |
| Rated voltage (III/2)              | 320 V               |
| Rated voltage (II/2)               | 630 V               |
| Connection in acc. with standard   | EN-VDE              |
| Nominal current $I_N$              | 12 A                |
| Nominal voltage $U_N$              | 250 V               |
| Nominal cross section              | 2.5 mm <sup>2</sup> |
| Maximum load current               | 12 A                |
| Insulating material                | PA                  |
| Inflammability class acc. to UL 94 | V0                  |
| Internal cylindrical gage          | A3                  |
| Stripping length                   | 7 mm                |

**Connection data**

|  |                      |
|--|----------------------|
| Conductor cross section solid min.   | 0.2 mm <sup>2</sup>  |
| Conductor cross section solid max.   | 2.5 mm <sup>2</sup>  |
| Conductor cross section stranded min.                                      | 0.2 mm <sup>2</sup>  |
| Conductor cross section stranded max.                                      | 2.5 mm <sup>2</sup>  |
| Conductor cross section stranded, with ferrule without plastic sleeve min. | 0.25 mm <sup>2</sup> |
| Conductor cross section stranded, with ferrule without plastic sleeve max. | 2.5 mm <sup>2</sup>  |
| Conductor cross section stranded, with ferrule with plastic sleeve min.    | 0.25 mm <sup>2</sup> |
| Conductor cross section stranded, with ferrule with plastic sleeve max.    | 2.5 mm <sup>2</sup>  |
| Conductor cross section AWG/kcmil min.                                     | 24                   |
| Conductor cross section AWG/kcmil max                                      | 12                   |
| 2 conductors with same cross section, solid min.                           | 0.2 mm <sup>2</sup>  |
| 2 conductors with same cross section, solid max.                           | 1 mm <sup>2</sup>    |
| 2 conductors with same cross section, stranded min.                        | 0.2 mm <sup>2</sup>  |

|   |                      |
|---|----------------------|
| 2 conductors with same cross section, stranded max.                                     | 1.5 mm <sup>2</sup>  |
| 2 conductors with same cross section, stranded, ferrules without plastic sleeve, min.   | 0.25 mm <sup>2</sup> |
| 2 conductors with same cross section, stranded, ferrules without plastic sleeve, max.   | 1 mm <sup>2</sup>    |
| 2 conductors with same cross section, stranded, TWIN ferrules with plastic sleeve, min. | 0.5 mm <sup>2</sup>  |
| 2 conductors with same cross section, stranded, TWIN ferrules with plastic sleeve, max. | 1.5 mm <sup>2</sup>  |

**Certificates / Approvals**

Approval logo



**CSA**

|                                |       |
|--------------------------------|-------|
| Nominal voltage U <sub>N</sub> | 300 V |
| Nominal current I <sub>N</sub> | 10 A  |
| AWG/kcmil                      | 28-12 |

**CUL**

|                                |       |
|--------------------------------|-------|
| Nominal voltage U <sub>N</sub> | 300 V |
| Nominal current I <sub>N</sub> | 10 A  |
| AWG/kcmil                      | 30-12 |

**UL**

|                                |                                 |
|--------------------------------|---------------------------------|
| Nominal voltage U <sub>N</sub> | 300 V                           |
| Nominal current I <sub>N</sub> | 10 A                            |
| AWG/kcmil                      | 30-12                           |
| Certification                  | CB, CSA, CUL, GOST, UL, VDE-PZI |

**Accessories**

| Item    | Designation | Description   |
|---------|-------------|---|
| 1051993 | B-STIFT     | Marker pen, for manual labeling of unprinted Zack strips, smear-proof and waterproof, line thickness 0.5 mm |

|         |                       |   |
|---------|-----------------------|---|
| 0804183 | SK 5/3,8:FORTL.ZAHLEN | Marker card, printed horizontally, self-adhesive, 12 identical decades marked 1-10, 11-20 etc. up to 91-(99)100, sufficient for 120 terminal blocks |
| 0805409 | SK 5/3,8:UNBEDRUCKT   | Marker cards, unprinted, with pitch divisions, self-adhesive, 10-section marker strips, 12 strips per card, can be labeled with the M-PEN           |

**Plug/Adapter**

|         |         |  |
|---------|---------|--|
| 1734634 | CP-MSTB | Coding profile, is inserted into the slot on the plug or inverted header, red insulating material    |
| 1734401 | CR-MSTB | Coding section, inserted into the recess in the header or the inverted plug, red insulating material |

**Tools**

|         |             |  |
|---------|-------------|--|
| 1205053 | SZS 0,6X3,5 | Screwdriver, bladed, matches all screw terminal blocks up to 4.0 mm <sup>2</sup> connection cross section, blade: 0.6 x 3.5 mm, without VDE approval |
|---------|-------------|--|

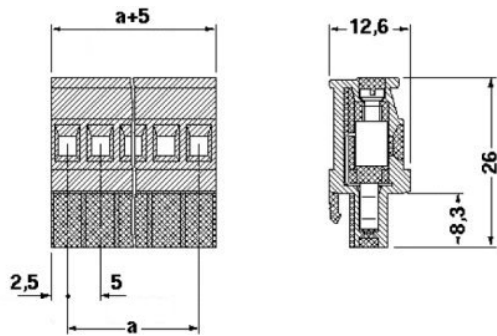
**Additional products**

| Item           | Designation       | Description   |
|----------------|-------------------|---|
| <b>General</b> |                   |   |
| 0707235        | DFK-MSTB 2,5/16-G | Header, nominal current: 12 A, rated voltage: 320 V, pitch: 5.0 mm, no. of positions: 16, mounting: Direct mounting |
| 1899980        | EMSTBA 2,5/16-G   | Header, nominal current: 12 A, rated voltage: 250 V, pitch: 5.0 mm, no. of positions: 16, mounting: press in        |
| 1914991        | EMSTBVA 2,5/16-G  | Header, nominal current: 12 A, rated voltage: 200 V, pitch: 5.0 mm, no. of positions: 16, mounting: press in        |
| 1762839        | MDSTB 2,5/16-G1   | Header, nominal current: 10 A, rated voltage: 250 V, pitch: 5.0 mm, no. of positions: 16, mounting: Soldering       |
| 1762981        | MDSTBV 2,5/16-G1  | Header, nominal current: 10 A, rated voltage: 250 V, pitch: 5.0 mm, no. of positions: 16, mounting: Soldering       |
| 1754711        | MSTB 2,5/16-G     | Header, nominal current: 12 A, rated voltage: 250 V, pitch: 5.0 mm, no. of positions: 16, mounting: Soldering       |
| 1768325        | MSTB 2,5/16-G-LA  | Header, nominal current: 12 A, rated voltage: 250 V, pitch: 5.0 mm, no. of positions: 16, mounting: Soldering       |
| 1757608        | MSTBA 2,5/16-G    | Header, nominal current: 12 A, rated voltage: 250 V, pitch: 5.0 mm, no. of positions: 16, mounting: Soldering       |
| 1770627        | MSTBA 2,5/16-G-LA | Header, nominal current: 12 A, rated voltage: 250 V, pitch: 5.0 mm, no. of positions: 16, mounting: Soldering       |
| 1753712        | MSTBV 2,5/16-G    | Header, nominal current: 12 A, rated voltage: 250 V, pitch: 5.0 mm, no. of positions: 16, mounting: Soldering       |
| 1755642        | MSTBVA 2,5/16-G   | Header, nominal current: 12 A, rated voltage: 250 V, pitch: 5.0 mm, no. of positions: 16, mounting: Soldering       |

|         |                 |   |
|---------|-----------------|---|
| 1735976 | MSTBW 2,5/16-G  | Header, nominal current: 12 A, rated voltage: 250 V, pitch: 5.0 mm, no. of positions: 16, mounting: Soldering |
| 1769379 | SMSTB 2,5/16-G  | Header, nominal current: 12 A, rated voltage: 250 V, pitch: 5.0 mm, no. of positions: 16, mounting: Soldering |
| 1769942 | SMSTBA 2,5/16-G | Header, nominal current: 12 A, rated voltage: 250 V, pitch: 5.0 mm, no. of positions: 16, mounting: Soldering |

**Drawings**

Dimensioned drawing



**Address**

PHOENIX CONTACT Inc., USA  
586 Fulling Mill Road  
Middletown, PA 17057, USA  
Phone (800) 888-7388  
Fax (717) 944-1625  
<http://www.phoenixcon.com>



© 2008 Phoenix Contact  
Technical modifications reserved;